

Electric Articulating Boom Lift

AB10ERJN/AB320ERJN Narrow Series



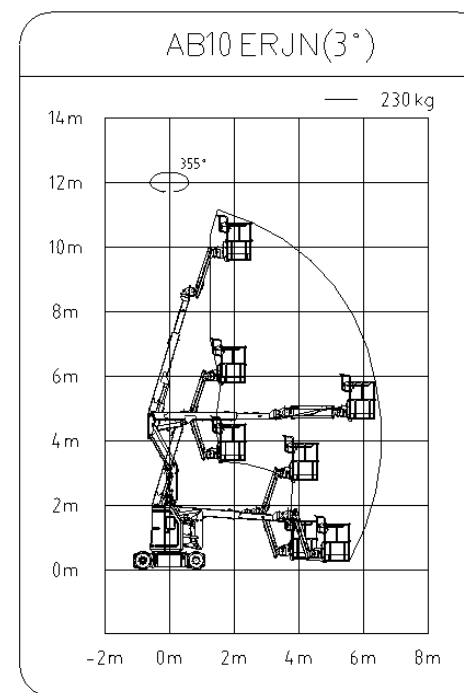
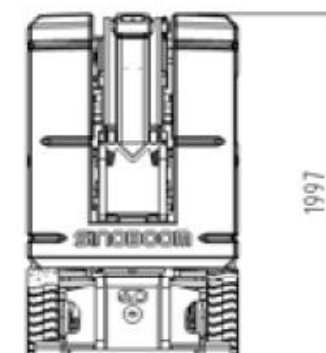
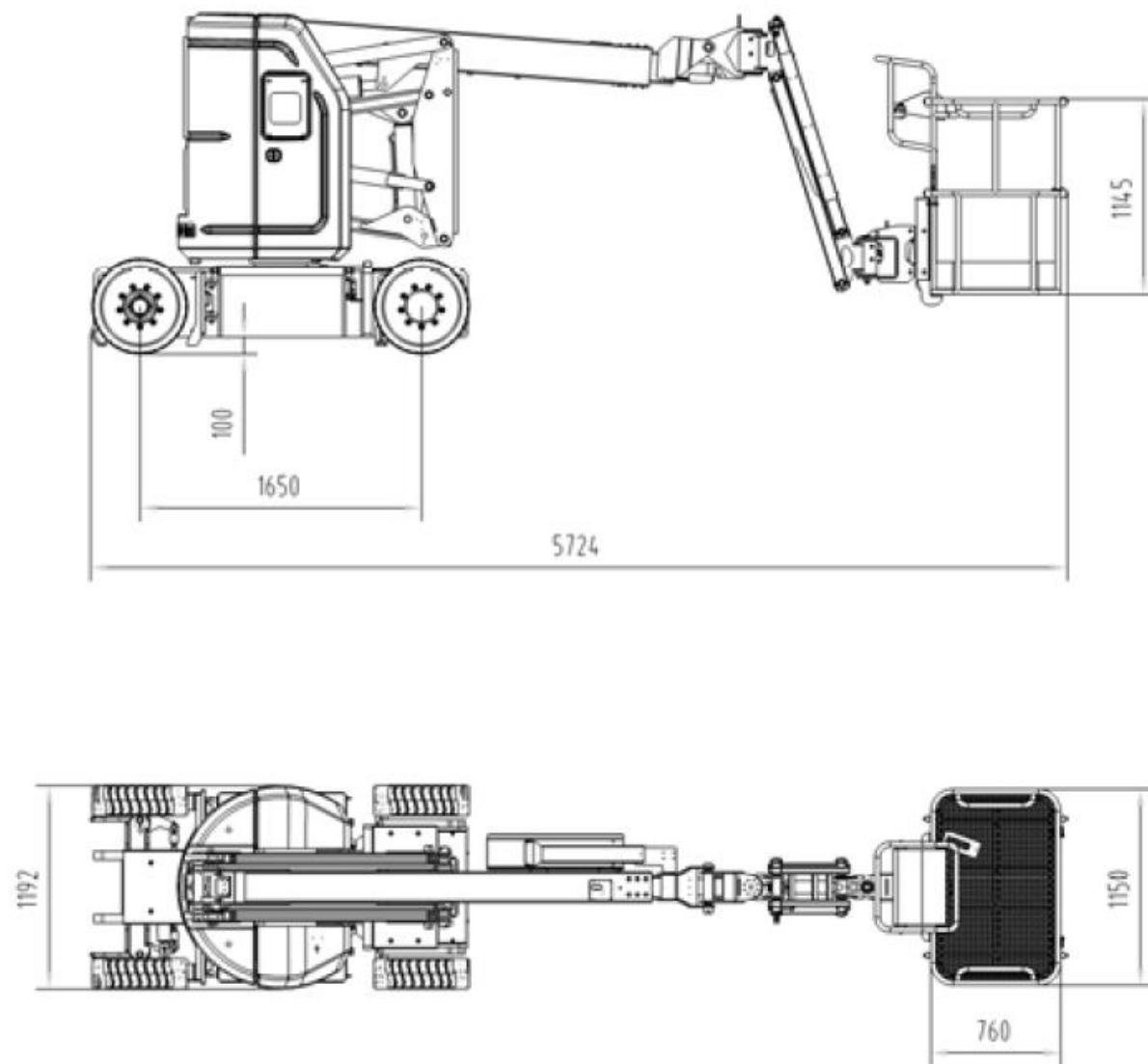
OVERVIEW (AB10ERJN/AB320ERJN)

SINOBOOM



OVERVIEW-APPEARANCE & WORKING RANGE

SINOBOOM



EQUIPPED WITH WORLD CLASS COMPONENTS

SINOBOOM





ELECTRIC CONTROL SYSTEM

- > Sinoboom family control system (Rexroth, ground and platform), compliant with ISO13849 PLd, safe and reliable
- > Electric emergency operation on both ground and platform controller
- > Excellent HMI experience



EXTREMELY AGILE

- > Compact design
1.19m/3'11" narrow chassis
1.99m/6'6" stowed height
Best in class light weight 6,550kg/14,440lbs
- > Agile for sensitive work areas & transport



EXCELLENT WORKING PERFORMANCE

- > 355° turntable rotation
- > 180° platform & jib horizontal rotation
- > 140° vertical jib articulation
- > Smooth and precise motion provides greater and flexible accessibility at confined worksite



GREATER CONTROLLABILITY AND MANEUVERABILITY

- > Electromagnetic multi-valve
- > AC drive system



ENERGY SAVING & ENVIRONMENT FRIENDLY

- > Gravity lower technology
- > Discover maintenance free battery



ELECTRIC CONTROL SYSTEM

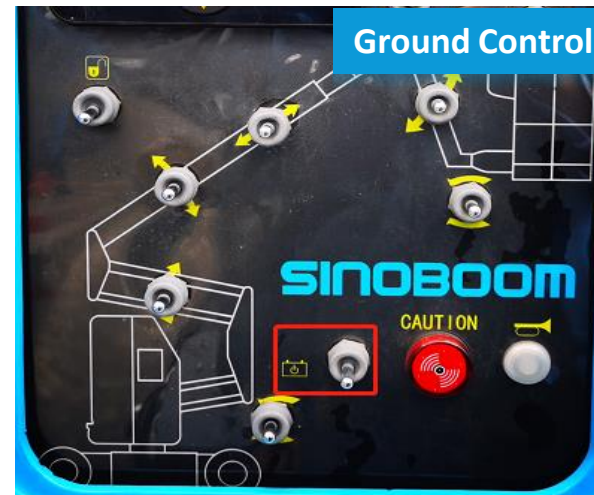
SINOBOOM

Sinoboom family safety controller from Rexroth



Electric Emergency Operation

- > This electric emergency switch is convenient for operator to lower to ground safely when machine is in abnormal.
- > Both available on ground and platform control.



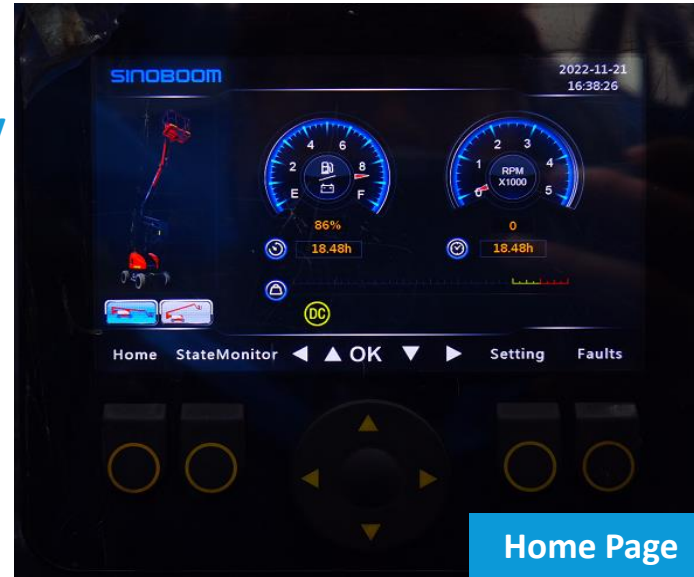


Excellent HMI Experience Operator & service maintenance engineer friendly

Best in class HMI

> Home page

Power status, load capacity, used time, motor speed etc.



> State monitoring

All function part state displayed.



> Setting

Parameter, time, imperial/metric etc.



> Trouble shooting

All faults are displayed on screen, easy and fast for trouble shooting, no additional tools required.





EXTREMELY AGILE

SINOBOOM

Compact & Light Weight

Compact Enough for Confined Working Environment

Enables where you expect to pass through easily and flexibly

INCREASING AGILITY

With only 1.19m narrow chassis and 1.99m stowed height, operator will be able to drive the machine to pass through standard doorways or confined spaces easily and flexibly.



EXTREMELY AGILE

SINOBOOM

- > 35% gradeability & automatic pothole protection features excellent possibility and easily loaded on trailer



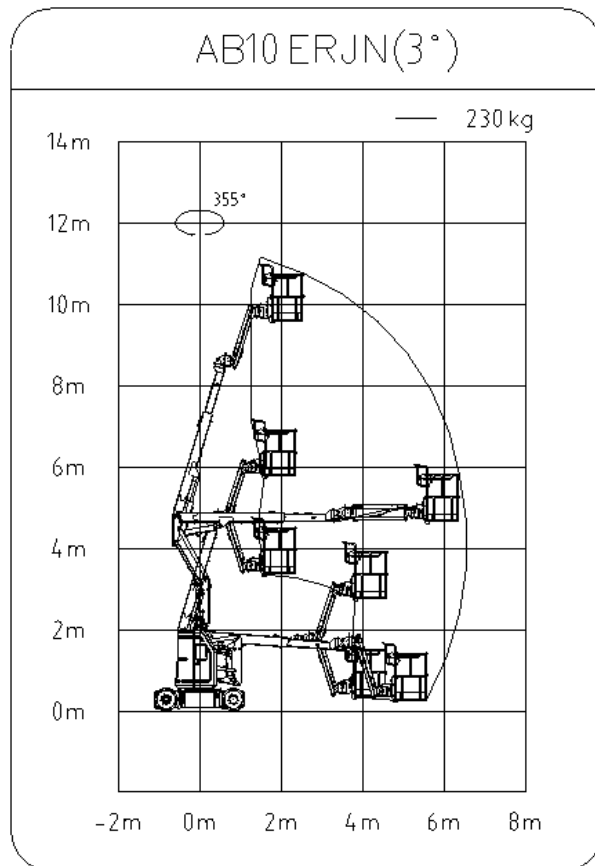
Automatic pothole protection device will be extended when boom is lifting and retracted when boom is lowering.



EXCELLENT WORKING PERFORMANCE

SINOBOOM

- > 355° turntable rotation.
- > 180° platform & jib horizontal rotation.
- > 140° vertical jib rotation.
- > Smooth and precise motion provides greater and flexible accessibility at confined work areas.

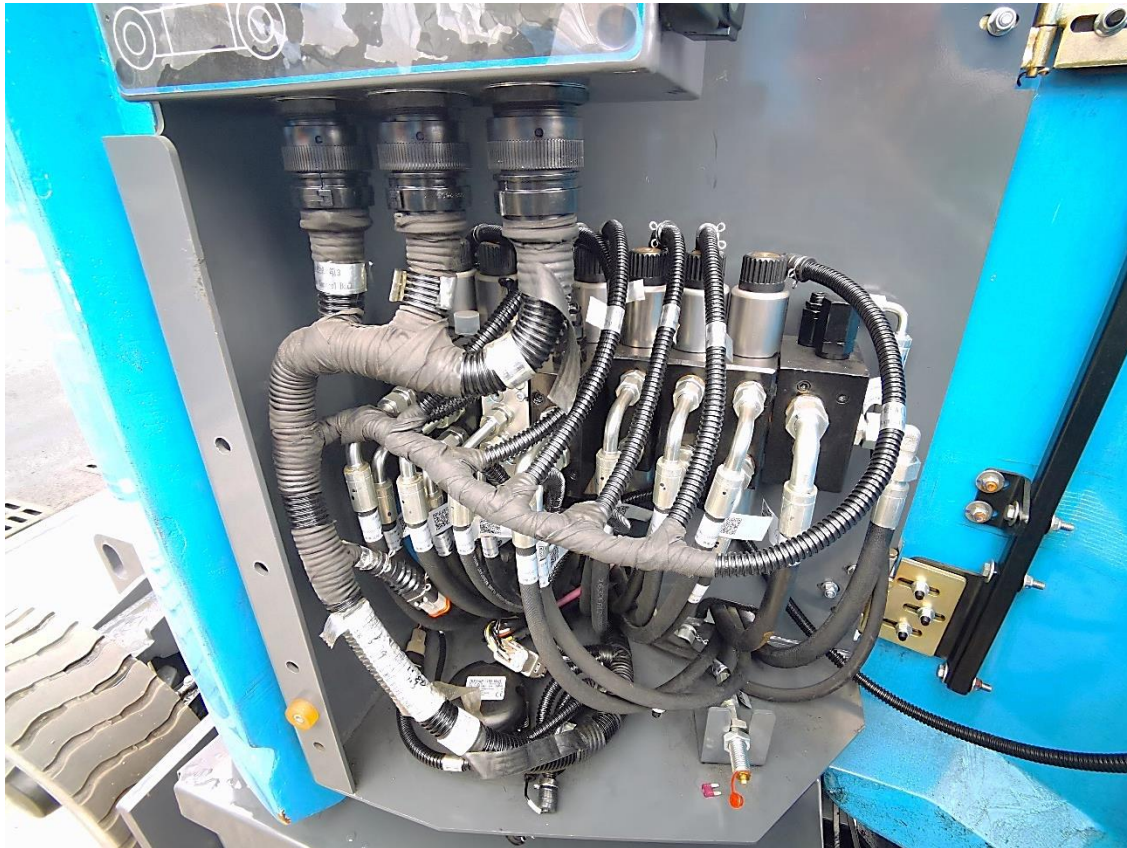




GREATER CONTROLLABILITY AND MANEUVERABILITY

SINOBOOM

> Electromagnetic multi-valve ensures smooth, precise and complicated up and over accessibility motions.



> AC drive motor combined with Curtis motor controller provide machine with powerful driving force.

- Proven Curtis motor controller
- Reel wheel AC drive, 3kW, 1572rpm





ENERGY SAVING & ENVIRONMENT FRIENDLY

SINOBOOM

Zero Emission and Maintenance Free Battery

- > Maintenance free battery, no worries of maintenance cost.
- > Zero emission makes a clean and better environment.



Discover®
Innovative Battery Solutions
Battery

- DRY CELL AGM Lead Acid
- 8 x 6V batteries
- 330Ah
- System voltage: 48V DC



Charger Information

- Input voltage: 100-240V AC
- Output power: 48V DC/30A

Gravity Lower Technology

- > Smooth and steady when lowering.
- > Energy saving.



THANK YOU !