

Powered Access



▶▶ **LEM 1800**



TRACKED HIGH REACH ARTICULATED BOOM LIFT

/// IHIMER



LEM 1800

REACH EQUIPMENT THAT DELIVERS MORE SAFETY AND PERFORMANCE

Designed to provide both safety and performance the all new LEM 1800 delivers the goods! Electronic safety controls work to prevent operator error, while the compact design coupled with hybrid power plants allow the LEM to be used almost anywhere. With its adjustable chassis width you can take the LEM almost everywhere, keep it narrow to enter buildings and other confined spaces, widen it out to tackle rough irregular terrain. With its ready to go weight of just 4,600 lbs. the cost and effort required to deliver the LEM 1800 to the job site is minimal. And, once on the job site its 59 foot reach is ideal for lighting repairs and installations, exterior building maintenance, tree pruning, and all other types of high reach construction and maintenance.



VARIABLE WIDTH CARRIAGE TRACKS

The ability of the chassis frame to extend out from 31 inches to 42 inches improves the LEM's ground clearance and also improves the LEM's ability to negotiate rough terrain. To change the track width simply raise the LEM by dropping the stabilizing legs, which in turn raises the chassis, and then allows you to pullout the quick release pins to widen or narrow the track's wheelbase. With the tracks in their retracted position the LEM's width dimension goes from 41 to 31 inches, and the height from 85 to 75 inches.



PLC ELECTRONIC CONTROL

PLC technology vastly improves the reliability of the LEM's electronic control systems. The ability to perform self-diagnosis is available, along with the downloading of software updates.

AUTOMATIC SAFETY CONTROLS

An educated and well trained operator is always the key to having the safest operation possible with any type of construction equipment. To assist the operator of the LEM 1800 an electric sensor system aids with the proper placement of the stabilization legs. In addition to the electronic sensor system there is also a slight level with a bubble indicator, using both systems together further improves operator safety.



OPERATOR PLATFORM SAFETY

In addition to the electronic sensors that monitor the LEM's stabilization legs, another electro-hydraulic sensor monitors the weight within the operator's basket. The sensor system ensures that the operator's basket does not exceed a workload of 440 lbs. This safety system is always operational under all working conditions.



LEM 1200

LEM 1500

LEM 1800

LEM 2200



VARIOUS ENGINE OPTIONS AND THE ELECTRIC MOTOR

The LEM 1800 is available with either a Honda 13 HP gas engine or a Yanmar 9.9 HP diesel. As the LEM is a hybrid it can also operate on its 110 V, 3 HP electric motor. Both the engine and electric motor are protected from being damaged by impact resistant canopies. These canopies also greatly reduce the noise level.

OPTIONAL CABLE OR RADIO REMOTE CONTROL

The movements on the LEM 1800 are controlled by user friendly hydraulic control valves, actuated by standard push/pull levers. Two remote control versions are available, choose from either cable or radio remote. The radio remote control has two batteries and a built-in charger. If the batteries should fail, a spiral umbilical cord can be attached and operations continue.



Technical features

LEM 1800

Working height	59 feet
Platform height	52.5 feet
Side reach	28 feet / 175 pounds
	24 feet / 395 pounds
	20 feet / 440 pounds
Turret rotation	359°
Operator basket dimensions	47 x 26 x 43 inches
Transport length	14 / 16 feet
Transport width	Min 31 / Max 42 inches
Height in stored position	Min 75 / Max 85 inches
Overall dimensions with stabilizers in position	10 x 12 feet
Driving speed	0 - 1.25 miles per hour
Max gradeability	14° / 25%
Lateral stabilization max gradeability	14° / 25%
Longitudinal stabilization max gradeability	11° / 20%
Max operator basket capacity	440 pounds
Gasoline engine	Honda GX390 - 13 HP 3600 RPM
Diesel engine	Yanmar LN10 - 9.9 HP 3600 RPM
Total weight of machine*	4,600 pounds

*average weight subject to variations to the set-up of the machine



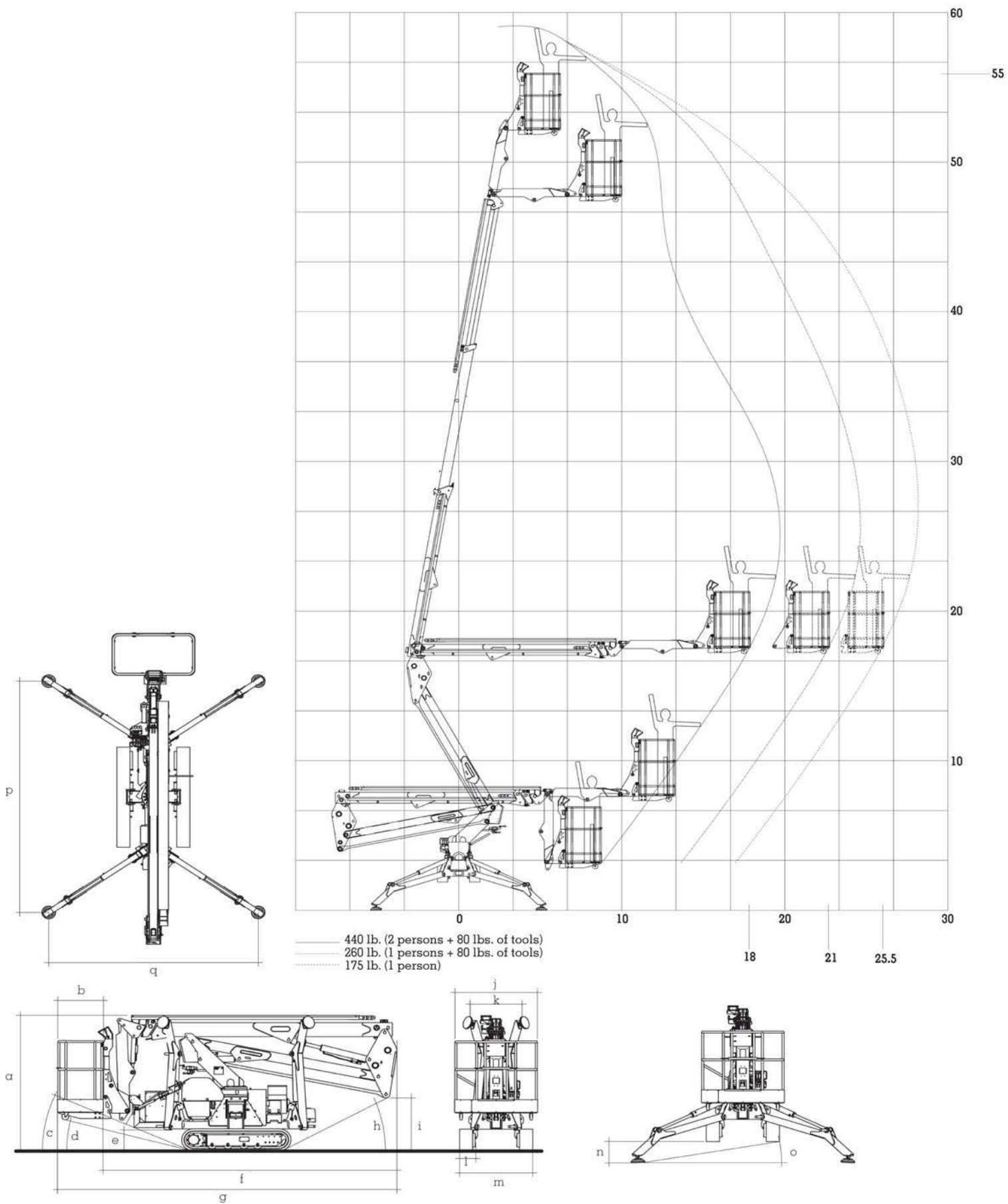
Photographs appearing in this catalog may differ in some cases from actual units. Specifications are subject to change without notice due to technical improvements and/or modifications.

» STANDARD EQUIPMENT

Emergency hand pump
Safety lock valves on all the actuators
Hour meter
Stabilizer / boom interlock system
Weight limiting device system for the operator basket
Rubber tracks
Mechanically extendable tracks
110 V - 24 A motor for indoor use
Air / Water outlets in the operator platform basket
110 V - 20 A outlet in the operator platform basket

» OPTIONAL EQUIPMENT

12 V emergency descent kit
Non-marking tracks
Radio remote control system
Cable remote control
Oversized stabilizer pads (ø 14 inches)
Leveling check kit
Oil kit for extremely low temperatures



Dimensions (inch)

LEM 1800*

a	b	c	d	e	f	g	h	i	j	k	l	m	n	o	p	q
84.5 / 75	26	24° / 9°	15°	13 / 4	14 (ft)	16 (ft)	29° / 14°	33 / 24	47	29.5	9	42 / 31	22 / 13	9° / 17°	12 (ft)	120



distributed by

IHIMER

IMER USA EAST (Headquarters)
221 Westhampton Pl.
Capitol Heights, MD 20743

IMER USA WEST
3654 Enterprise Avenue
Hayward, CA 94545

Phone: (800) 275-5463 - Fax: (301) 336-6687
www.imerusa.com

IHI 
GROUP