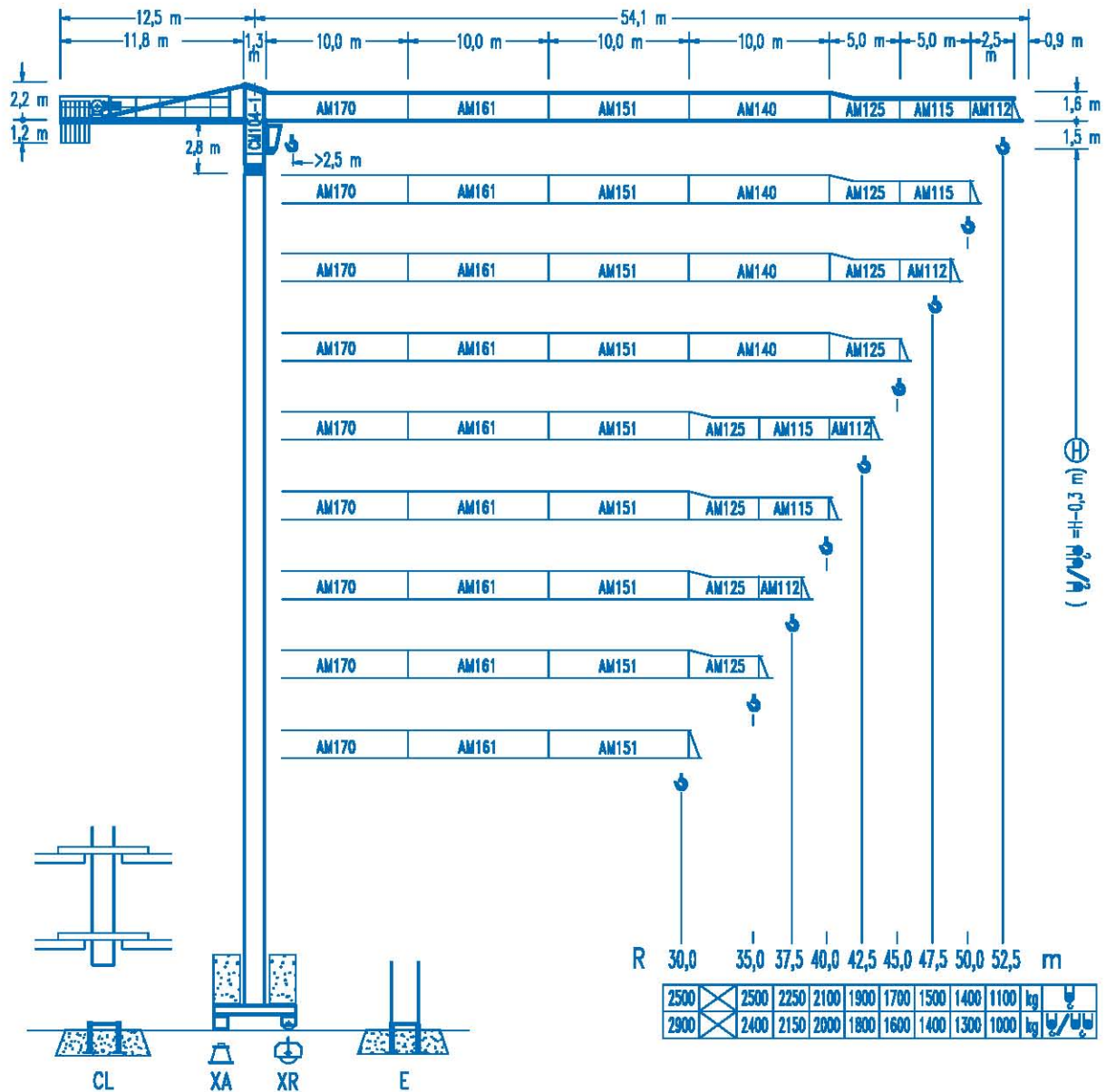




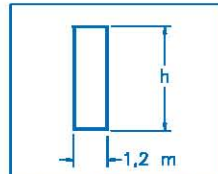
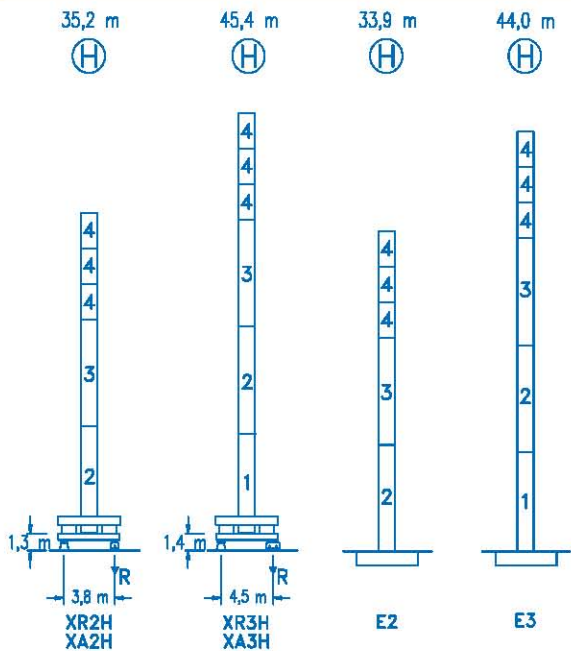
LC-5211

5 t



CE
DIN 15018 H1 B3

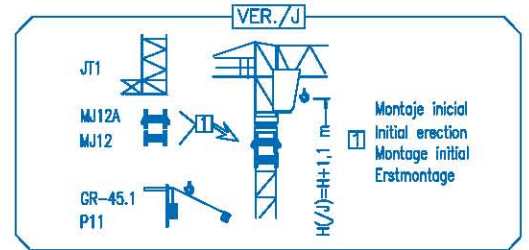
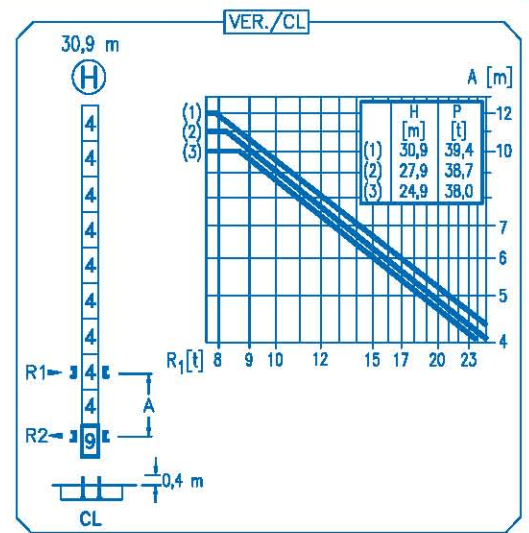
R	R(Cmax)	Cmax	20,0	25,0	30,0	35,0	37,5	40,0	42,5	45,0	47,5	50,0	52,5	kg
52,5	26,8 m	2500	2500	2500	2190	1820	1680	1550	1440	1340	1250	1170	1100	kg
	14,2 m	5000	3380	2600	2080	1720	1580	1450	1340	1240	1150	1070	1000	
50,0	30,8 m	2500	2500	2500	2500	2150	1980	1840	1710	1590	1490	1400	kg	
	16,3 m	5000	3960	3060	2470	2050	1880	1740	1610	1490	1390	1300		
47,5	30,9 m	2500	2500	2500	2500	2160	1990	1850	1720	1600	1500	kg		
	16,3 m	5000	3980	3080	2480	2060	1890	1750	1620	1500	1400			
45,0	32,4 m	2500	2500	2500	2500	2290	2110	1960	1820	1700	kg			
	17,1 m	5000	4200	3250	2630	2190	2010	1860	1720	1600				
42,5	33,6 m	2500	2500	2500	2380	2200	2040	1900	kg					
	17,8 m	5000	4380	3390	2740	2280	2100	1940		1800				
40,0	34,4 m	2500	2500	2500	2450	2260	2100	kg						
	18,2 m	5000	4500	3490	2820	2350	2160		2000					
37,5	34,2 m	2500	2500	2500	2440	2250	kg							
	18,1 m	5000	4470	3470	2800	2340		2150						
35,0	35,0 m	2500	2500	2500	2500	kg								
	18,5 m	5000	4580	3560	2880		2400							
30,0	30,0 m	2500	2500	2500	kg									
	18,6 m	5000	4610	3580		2900								



N	Ref.	h
1	MT123	10,1 m
2	MH124A	11,8 m
3	MH124-1	11,8 m
4	MH121	3,0 m
9	CL20	2,2 m

MH124=(4)MH121-0,2 m

- H=H+0,2 m
- H=H
- H=H
- H=H-0,2 m



XR2H	46,0 t
XR3H	49,0 t

R. máx.	Fuera de servicio Out of service Hors service Ausser Betrieb	XR2H	50,9 t
		XR3H	72,4 t

CS2-1.9

1,9 kW

16 m/min
48 m/min

CFU-2.2

2,2 kW

0 ⇄ 80 m/min

GR-9.0

90 Nm

0 ⇄ 0,7 rpm

TS2-4.5	TS2-5.5
2x45 Nm	2x55 Nm
0 ⇄ 20 m/min	
XR2H	XR3H

250 m

ES3-18-12

18 kW

	I	II	III
m/min	8	32	64
kg	2500	2500	1300
m/min	4	16	32
kg	5000	5000	2600

250 m

EFU2-18-12

18 kW

Tensión de alimentación Operating voltage Tension de service Betriebsspannung	400 V 3 ph 50 Hz
--	------------------------

Opcional
Optional
En option
Kaufoption



ALICANTE
Ctra. Valencia, N-332-P.K. 116
03550 San Juan (Alicante)
Tel: 902 130 083 Fax: 965 653 204
info@malcop.com

ALBACETE
C/ Guadalajara, Parcela 26, Nave 2
Pol. Ind. Camporroso
02520 Chinchilla (Albacete)
Tel: 967 890 032 Fax: 967 261 531

MURCIA
C/Lorca, 2
Pol. Ind. La Polvorista
03500 Molina del Segura (Murcia)
Tel: 968 616 015 Fax: 968 625 298

VALENCIA
Pol. Ind. El Oliveral
Sub. Pol. II, Parcela 14, Nave 2 B
46394 Ribarroja (Valencia)
Tel: 961 665 992 Fax: 961 665 993