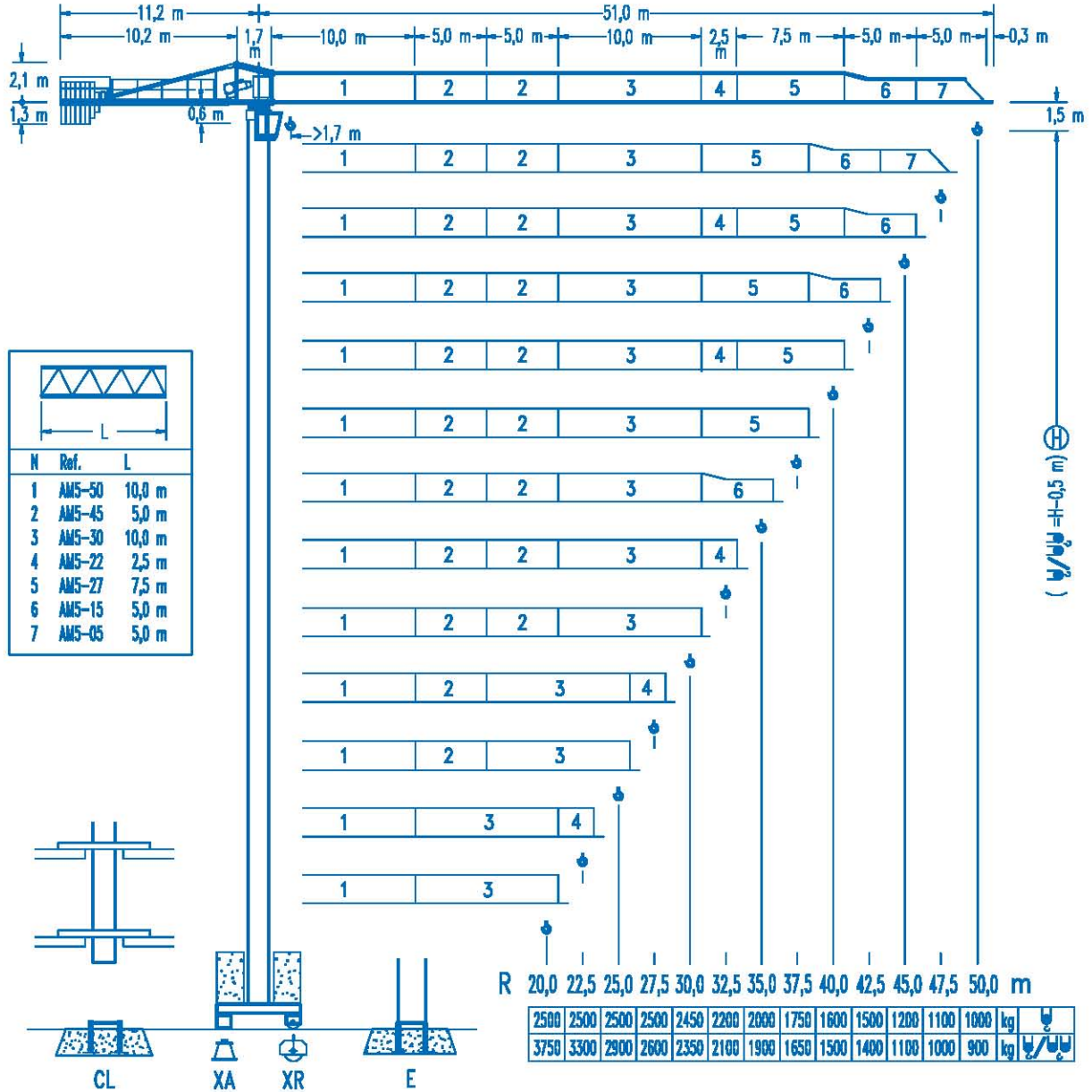




**LINDEN 500**

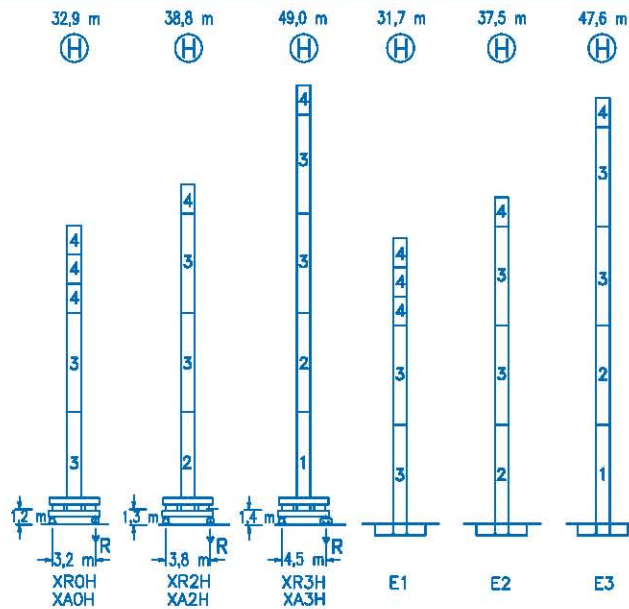
**5 LC 5010**

**5 t**



CE  
DIN 15018 H1 B3

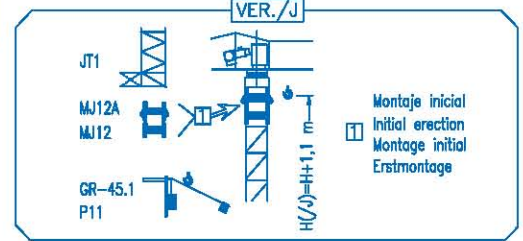
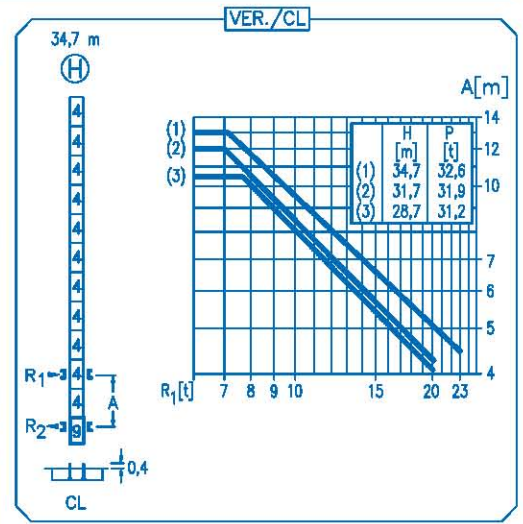
R	R(Cmax)	Cmax	20,0	22,5	25,0	27,5	30,0	32,5	35,0	37,5	40,0	42,5	45,0	47,5	50,0	kg
50,0	22,8 m	2500	2500	2500	2250	2020	1830	1670	1530	1410	1310	1220	1140	1070	1000	kg
	12,2 m	5000	2850	2480	2190	1950	1760	1590	1450	1330	1220	1120	1040	970	900	
47,5	23,4 m	2500	2500	2500	2320	2090	1890	1720	1580	1460	1350	1260	1170	1100	kg	
	12,5 m	5000	2930	2550	2250	2010	1810	1640	1490	1370	1260	1160	1080	1000		
45,0	23,8 m	2500	2500	2500	2370	2130	1930	1760	1610	1490	1380	1280	1200	kg		
	12,7 m	5000	2980	2600	2300	2050	1840	1670	1520	1400	1280	1190	1100			
42,5	27,1 m	2500	2500	2500	2460	2230	2040	1880	1730	1610	1500	kg				
	14,4 m	5000	3450	3010	2660	2380	2150	1950	1780	1640	1510		1400			
40,0	27,0 m	2500	2500	2500	2450	2220	2030	1860	1720	1600	kg					
	14,3 m	5000	3420	2990	2640	2370	2130	1940	1770	1630		1500				
37,5	27,3 m	2500	2500	2500	2480	2250	2060	1890	1750	kg						
	14,5 m	5000	3470	3030	2680	2400	2160	1970	1800		1650					
35,0	28,7 m	2500	2500	2500	2500	2380	2170	2000	kg							
	15,1 m	5000	3650	3190	2830	2530	2280	2080		1900						
32,5	29,0 m	2500	2500	2500	2500	2410	2200	kg								
	15,3 m	5000	3690	3230	2860	2560	2310		2100							
30,0	29,5 m	2500	2500	2500	2500	2450	kg									
	15,5 m	5000	3750	3280	2910	2600		2350								



N Ref.	h
1 MT123	10,1 m
2 MH124A	11,8 m
3 MH124-1	11,8 m
4 MH121	3,0 m
9 CL20	2,2 m

MH124=(4)MH121-0,2 m

- H=H+0,2 m
- H=H
- H=H
- H=H-0,2 m



<b>R. máx.</b>	En servicio	XR0H ..... 43,2 t
	In operation	
	En service	
	In Betrieb	
		XR2H ..... 42,8 t
		XR3H ..... 48,2 t

<b>R. máx.</b>	Fuera de servicio	XR0H ..... 48,4 t
	Out of service	
	Hors service	
	Ausser Betrieb	
		XR2H ..... 57,2 t
		XR3H ..... 77,9 t

**CS2-1.9**

1,9 kW

16 m/min  
48 m/min

**CFU-2.2**

2,2 kW

0 ⇄ 80 m/min

**GR-9.0**

90 Nm

0 ⇄ 0,8 rpm

<b>TS2-3.0</b>	<b>TS2-4.5</b>	<b>TS2-5.5</b>
2x30 Nm	2x45 Nm	2x55 Nm
0 ⇄ 20 m/min		
<b>XR0H</b>	<b>XR2H</b>	<b>XR3H</b>

250 m

**ES3-18-12**

18 kW

	I	II	III
m/min	8	32	64
kg	2500	2500	1300
m/min	4	16	32
kg	5000	5000	2600

250 m

**ES3-13-12**

13,2 kW

	I	II	III
m/min	6	24	48
kg	2500	2500	1300
m/min	3	12	24
kg	5000	5000	2600

250 m

**EFU2-18-12**

18 kW

250 m

**EFU2-11-12**

11 kW

Tensión de alimentación	400 V
Operating voltage	3 ph
Tension de service	50 Hz
Betriebsspannung	

Opcional  
Optional  
En option  
Kauffoption

**\***



ALICANTE  
Ctra. Valencia, N-332-P.K. 116  
03550 San Juan (Alicante)  
Tel: 902 130 003 Fax: 965 653 204  
info@malcop.com

ALBACETE  
C/ Guadalajara, Parcela 26, Nave 2  
Pol. Ind. Camporrose  
02520 Chinchilla (Albacete)  
Tel: 967 890 032 Fax: 967 261 531

MURCIA  
C/Lorca, 2  
Pol. Ind. La Polvorista  
03500 Molina del Segura (Murcia)  
Tel: 968 616 015 Fax: 968 629 298

VALENCIA  
Pol. Ind. El Oliveral  
Sub. Pol. II, Parcela 14, Nave 2 B  
46394 Ribarroja (Valencia)  
Tel: 961 665 992 Fax: 961 665 993